

## EnOcean Gateway (434)

The 434 EnOcean Gateway allows you to connect wireless and batteryless EnOcean controls to a Helvar DALI lighting network.

It can be mounted on the ceiling or on walls, and requires only a single electrical connection to a DALI network.

Once installed, the 434 will support up to 20 EnOcean switches without any other wiring. The switches are batteryless, thanks to energy-harvesting technology, and maintenance-free. Energy is generated by pressing the EnOcean button, and a radio signal is sent to the Gateway.

The EnOcean switches can be configured in just a few minutes using Helvar's Designer or Toolbox software.



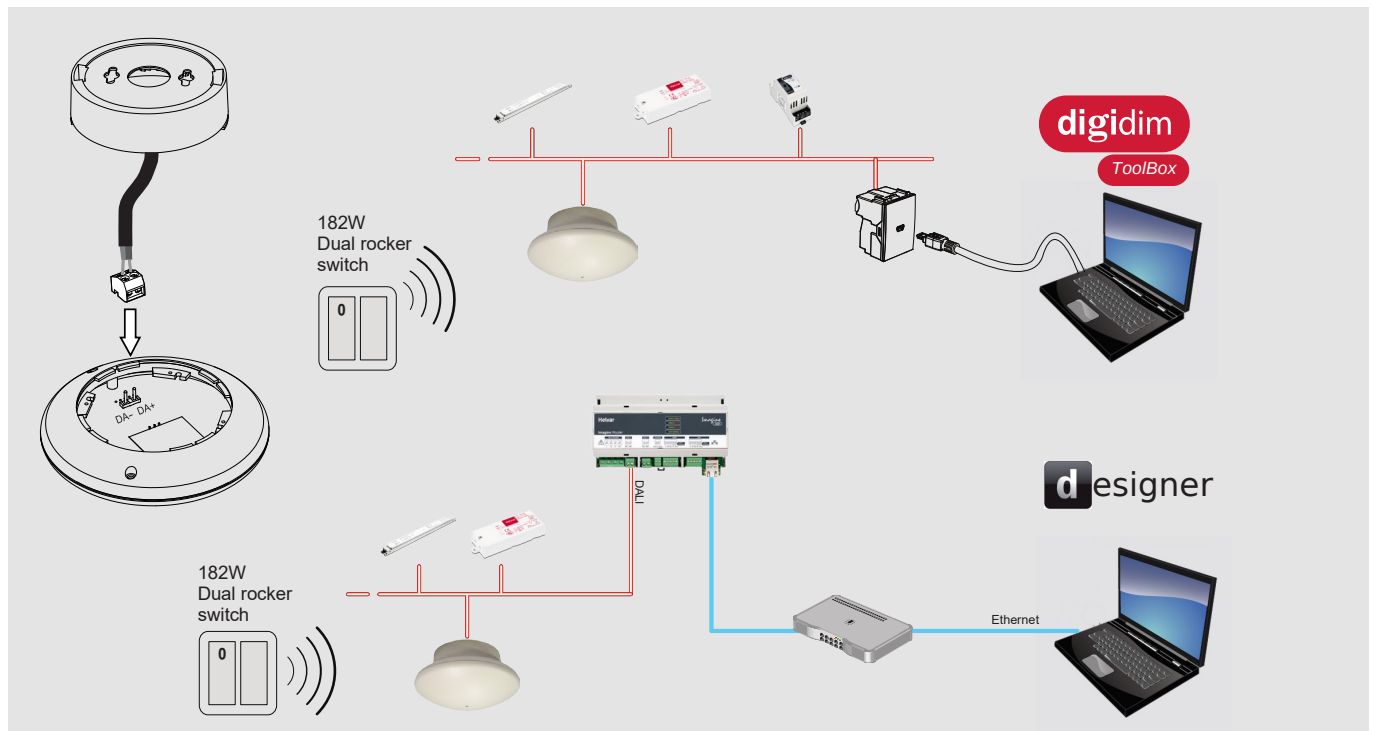
### Key Features

- Integrate wireless, batteryless switches into DALI network.
- Simple installation.
- Gateway is powered by the DALI network.
- Up to 20 switches can be integrated via one gateway.

### Product Order Codes:

- EnOcean Gateway [868 MHz]: 434
- EnOcean Gateway/2 [928 MHz]: 434/2

### Connections



## Technical Data

### Connections

DALI: Removable 2-part connector block  
Wire size: 0.5 mm<sup>2</sup> – 2.5 mm<sup>2</sup> solid or stranded

Cable rating: All cables must be mains rated.

### Power

DALI supply input: 13 V – 22.5 V  
DALI consumption: 20 mA

### Operation

Supported profile: EnOcean EEP F6-02-xx, F6-04-xx (PTM 210/215 normal mode)

Range (switches): Typical EnOcean Switches: 30 m (unobstructed space)

Max. No. of switch units per gateway: 20

### Operating frequencies

The following models can be safely used in the countries listed below:

Model	Frequency and countries
434	868 MHz European Union, Iceland, Liechtenstein, Norway, Switzerland and other countries adopting the RED directive.
434/R2	928 MHz Japan and other countries adopting the ARIB specification.

### Mechanical data

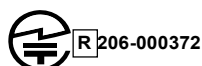
Dimensions: 110 mm (∅) × 58 mm  
Weight: 75 g  
Colour: White: RAL 9002  
IP code: IP30

### Operating conditions

Ambient temperature: 0 °C to +50 °C  
Relative humidity: Max. 90 %, noncondensing  
Storage temperature: -10 °C to +70 °C

### Conformity and standards

EMC: EN 55015  
EN 61547  
Safety: EN 60950-1  
RED: EN 300220-2 (434)  
EN 301489-3 (434)  
ARIB: STD-T108 (434/2)



Wireless protocol: ISO/IEC 14543-3-10  
Environment: Complies with WEEE and RoHS directives.

### Status LED

EnOcean Receiver

Receives control commands from EnOcean switches (available separately).

Status LED: red or green.

In normal operation, the LED remains unlit.

The red LED flashes to indicate one of the following:

- FAST: DALI network in process of discovering the Gateway.
- FAST: Designer or Toolbox software identifying the Gateway.
- SLOW (every 1.25 s): Gateway is in Learning Mode.

The green LED flashes to indicate the following:

- The Gateway is in Learning Mode, and has detected a switch (received a signal from a switch unit).

### Dimensions (mm)

