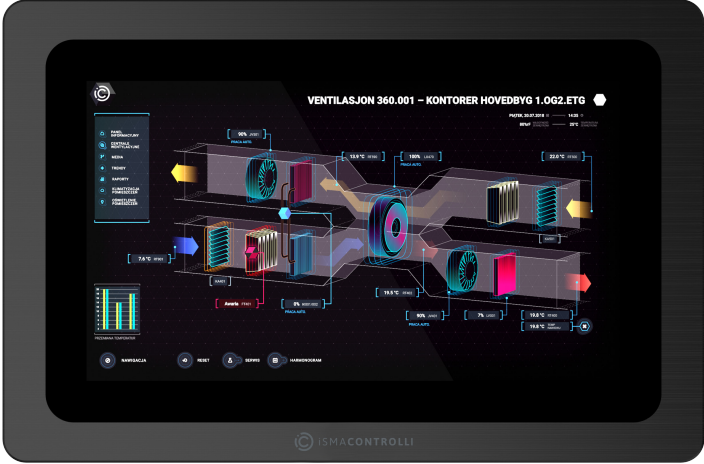


10.1" Industrial PC Panel

MODEL	DESCRIPTION
iSMA-D-PA10C-B1	10.1" Industrial PC Panel with Android 7.1 operating system and dedicated iSMA Android Application.



APPLICATION AND USE

iSMA-D-PA10C-B1 is a 10.1" Industrial PC Panel with Android operating system. It has been designed to simplify the use of the Master Application Controller, MAC36NL. The panel can be connected with MAC36NL, JACE, or Supervisor powered by Niagara or any HTML5 web server-based controller to display graphics on a web page. The Android PC panel can also be used as a user interface. The dedicated iSMA Android Application, pre-installed on the panel, enables communication with multiple IP-based devices in the building. The aspect ratio of 16:10 with the 1280:800 resolution enable clear display of graphics. The panel is VESA compliant and can be wall-mounted. The panel has an extensive menu in 7 languages, where the displayed image can be easily customized. Available with EU, UK, or US power adapter.

FEATURES

- Android 7.1 operating system
 - 10.1" display with capacitive touch screen
 - Aspect ratio 16:10
 - Resolution 1280:800
 - Response time 5 ms
- IP65 for front panel
 - Aluminium alloy enclosure
 - VESA compatible
 - Available with EU, UK or US power adapter

DEDICATED SOFTWARE



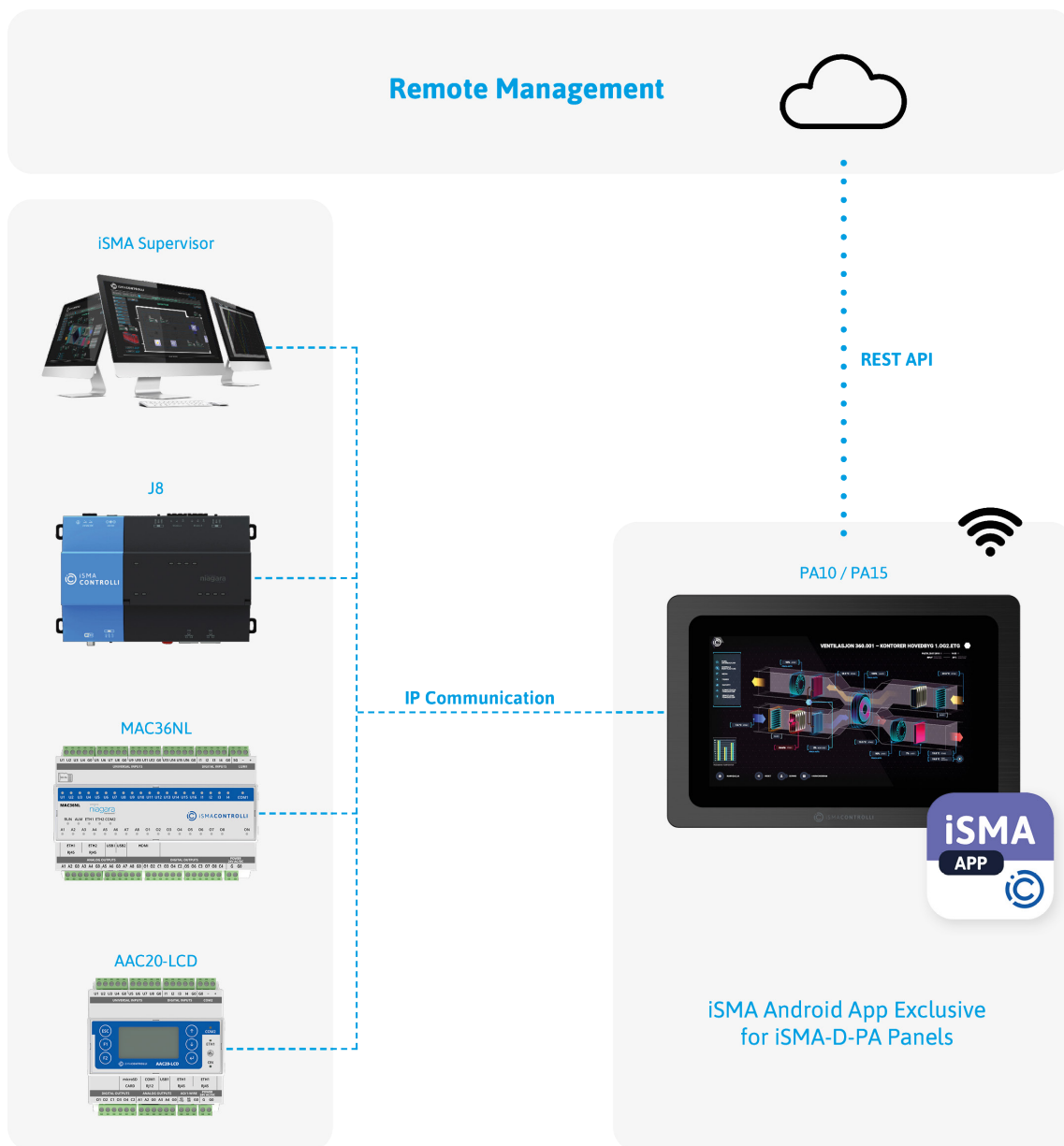
iSMA Android Application - app designed for iSMA CONTROLI Android panels, which allows for easy logging and accessing the Niagara station or any HTML5 web server

iSMA ANDROID APPLICATION FEATURES

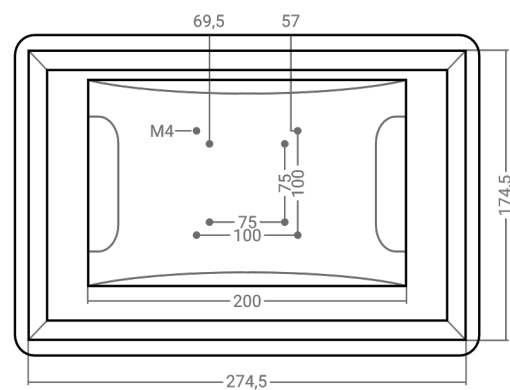
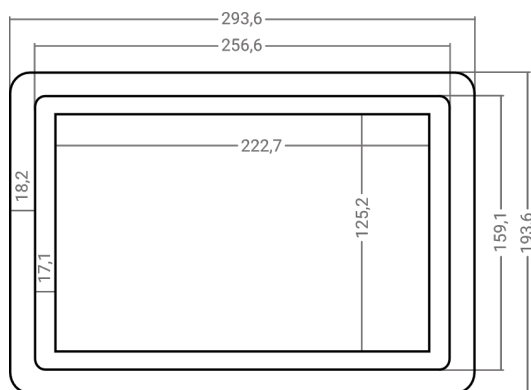
- Exclusive for iSMA CONTROLI Android panels
 - Support for multiple device views including Niagara stations and HTML5 web servers
 - HTTPS support
 - Autologin
 - Home station that autostarts with the app
- Kiosk mode
 - PIN protection of each view
 - Export settings to a file
 - Import settings from a file
 - Rest API for remote app management

The performances stated in this sheet can be modified without any prior notice.

DESCRIPTION		10.1" PC PANEL
Power supply	Voltage	110-240 V AC, 50/60 Hz
	Power input	12 V DC
	Power adapter	EU, UK, or US
Display	Screen type	LCD, backlight lifetime ≥50000 h
	Touch type	10-point capacitive touch screen
	Size	10.1 in
	Aspect ratio	16:10
	Resolution	1280:800
	Contrast	800:1
	Luminance standard	300 nit
	Response time	5 ms
	Active area	222.70x125.20 mm/8.77x4.93 in
	Display colors	16.7 M
	View angle	75/75/75/75
Interfaces	COM1	RS232
	COM2	RS232
	Audio	Audio output
	ETH1	RJ45 port
	ETH2	RJ45 port
	USB1	USB C OTG
	USB2	USB 2.0
	USB3	USB 3.0
	HDMI	HDMI port
	TF/SD card	TF/SD card slot
	SIM	SIM card slot
Ingress protection	IP rating	IP 65 for front panel
Temperature	Storage	-10°C to 60°C (14°F to 140°F)
	Operating	0°C to 60°C (32°F to 140°F)
Humidity	Relative	10 to 80% RH
Housing	Material	Aluminum alloy enclosure
	Mounting	VESA compatibility, wall mounting
Dimensions	Width	293.60 mm/11.56 in
	Length	193.60 mm/7.62 in
	Height	48.50 mm/1.90 in



DIMENSIONS [mm]



QUICKLINK SOLUTIONS S.r.l. | info@qlsol.com

Sede operativa nord ovest: Via G. Matteotti 193-203, 21044 Cavarina con Premazzo (VA), Italy
Sede operativa nord est: Via F. Petrarca, 34, 35020 Albignasego (PD), Italy