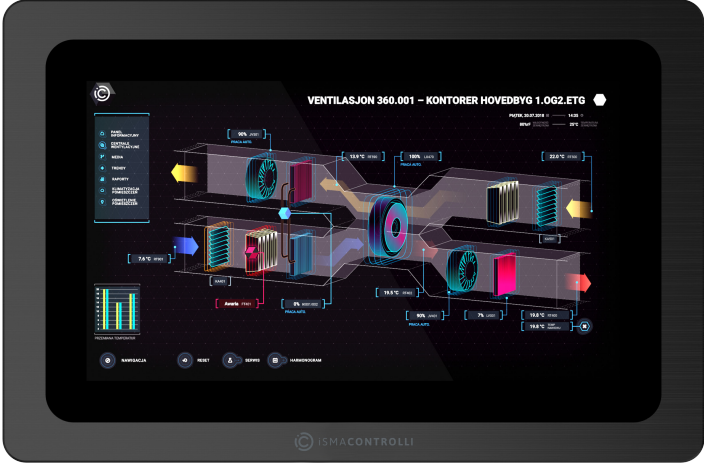


15.6" Industrial PC Panel

MODEL	DESCRIPTION
iSMA-D-PA15C-B1	15.6" Industrial PC Panel with Android operating system and dedicated iSMA Android Application



APPLICATION AND USE

iSMA-D-PA15C-B1 is a 15.6" Industrial PC Panel with the Android 7.1 operating system. It has been designed to simplify the use of the Master Application Controller iSMA-B-MAC36NL. The panel can be connected with MAC36NL, JACE, or Supervisor powered by Niagara or any HTML5 web server-based controller to display graphics on a web page. The Android PC panel can also be used as a user interface. The dedicated iSMA Android Application, pre-installed on the panel, enables communication with multiple IP-based devices in the building. The aspect ratio of 16:9 with the 1920x1080 resolution enable clear display of graphics. The panel is VESA compliant and can be wall-mounted. The panel has an extensive menu in 7 languages, where the displayed image can be easily customized. Available with EU, UK, or US power adapter.

FEATURES

- Android 7.1 operating system
 - 15.6" display with capacitive touch screen
 - Aspect ratio 16:9
 - Resolution 1920x1080
 - Response time 5 ms
- IP65 for front panel
 - Aluminum alloy enclosure
 - VESA compatible
 - Available with EU, UK, or US power adapter

DEDICATED SOFTWARE



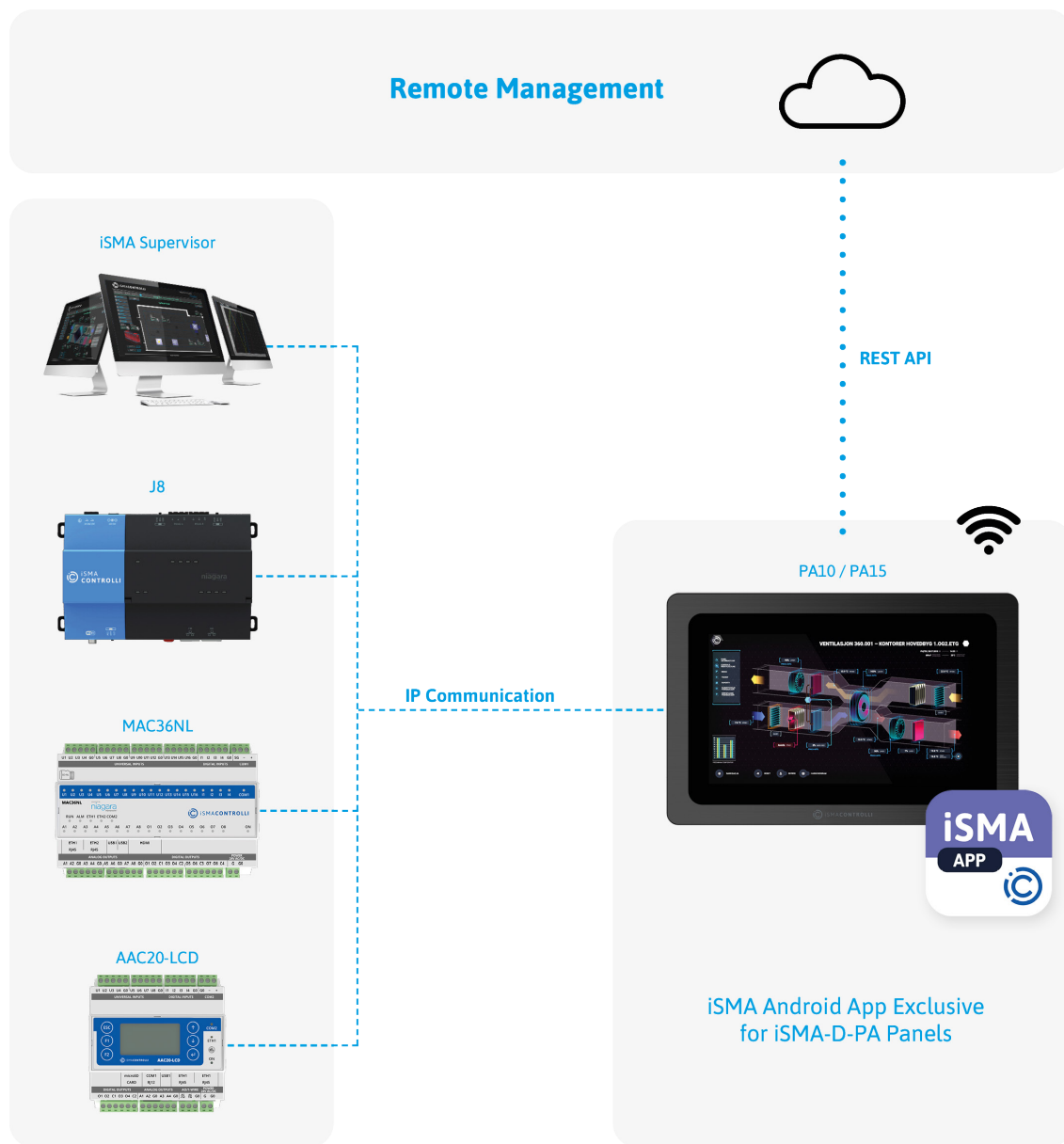
iSMA Android Application - app designed for iSMA CONTROL LI Android panels, which allows for easy logging and accessing the Niagara station or any HTML5 web server

iSMA ANDROID APPLICATION FEATURES

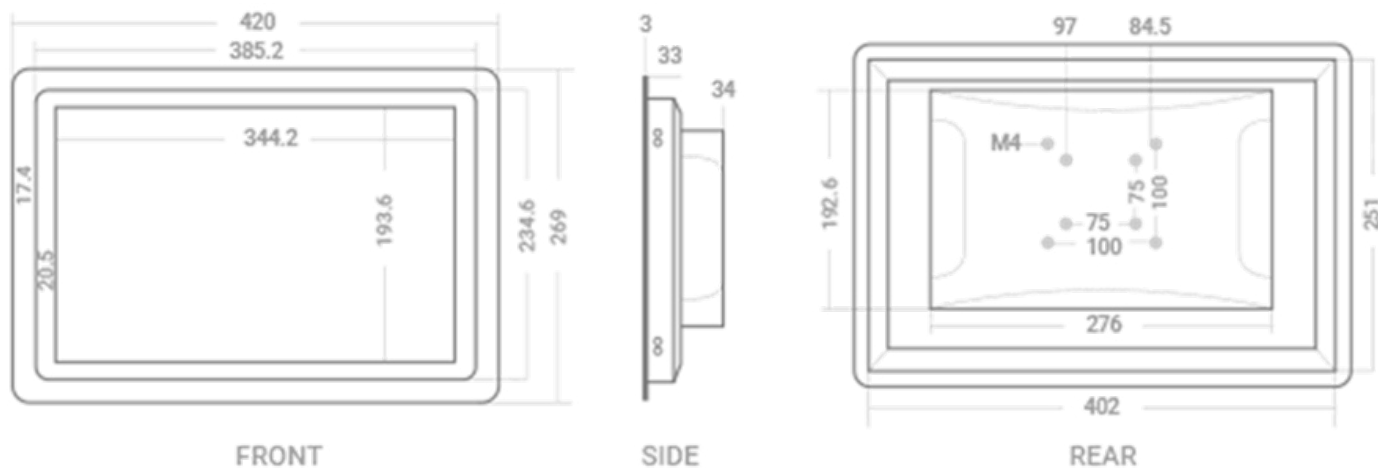
- Exclusive for iSMA CONTROL LI Android panels
 - Support for multiple device views including Niagara stations and HTML5 web servers
 - HTTPS support
 - Autologin
 - Home station that autostarts with the app
- Kiosk mode
 - PIN protection of each view
 - Export settings to a file
 - Import settings from a file
 - Rest API for remote app management

The performances stated in this sheet can be modified without any prior notice.

DESCRIPTION		15.6" PC PANEL
Power supply	Voltage	110-240 V AC, 50/60 Hz
	Power input	12 V DC
	Power adapter	EU, UK, or US
Display	Screen type	LCD, backlight lifetime ≥50000 h
	Touch type	10-point capacitive touch screen
	Size	15.6 in
	Aspect ratio	16:9
	Resolution	1920x1080
	Contrast	1000:1
	Luminance standard	300 nit, up to 1000 nit
	Response time	5 ms
	Active area	344.20x193.60 mm/13.55x7.62 in
	Display colors	16.7 M
	View angle	80/80/80/80
Interfaces	COM1	RS232
	COM2	RS232
	Audio	Audio output
	ETH1	RJ45 port
	ETH2	RJ45 port
	USB1	USB C OTG
	USB2	USB 2.0
	USB3	USB 3.0
	HDMI	HDMI port
	TF/SD card	TF/SD card slot
	SIM	SIM card slot
Ingress protection	IP rating	IP 65 for front panel
Temperature	Storage	-10°C to 60°C (14°F to 140°F)
	Operating	0°C to 60°C (32°F to 140°F)
Humidity	Relative	10 to 80% RH
Housing	Material	Aluminum alloy enclosure
	Mounting	VESA compatibility, wall mounting
Dimensions	Width	420.00 mm/16.53 in
	Length	269.00 mm/10.59 in
	Height	70.00 mm/2.75 in



DIMENSIONS [mm]



QUICKLINK SOLUTIONS S.r.l. | info@qlsol.com

Sede operativa nord ovest: Via G. Matteotti 193-203, 21044 Cavarina con Premazzo (VA), Italy

Sede operativa nord est: Via F. Petrarca, 34, 35020 Albignasego (PD), Italy