

iSMA Android Application

iSMA Android Application is an app designed for our industrial PC panels, which allows for **easy logging** and **accessing Niagara station or any HTML5 webserver**.

The credentials to the Niagara station can be entered just once, and with each log out or restart of the industrial panel PC, the user is automatically logged back in.

The Android operating system gives a lot of possibilities but what if you want your device to be only a user interface to keep track of the temperature in rooms, change some settings of your system? Just turn on the **Kiosk Mode** available in the application and no other application can be used. You can turn off the Kiosk Mode only if you know the password.

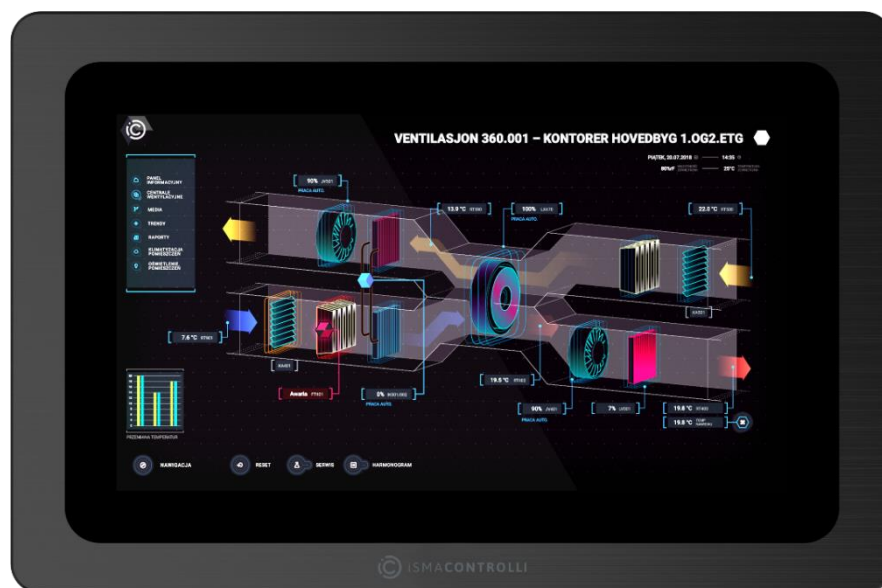
What Kiosk Mode means in our application:

- When turned on, a user cannot use other applications than our iSMA Android Application. All other Android functions are blocked.
- The panel PC can be still restarted and turned off.
- The user cannot turn off/restart the Android panel.

The password is needed to disable the Kiosk mode.

Key Features

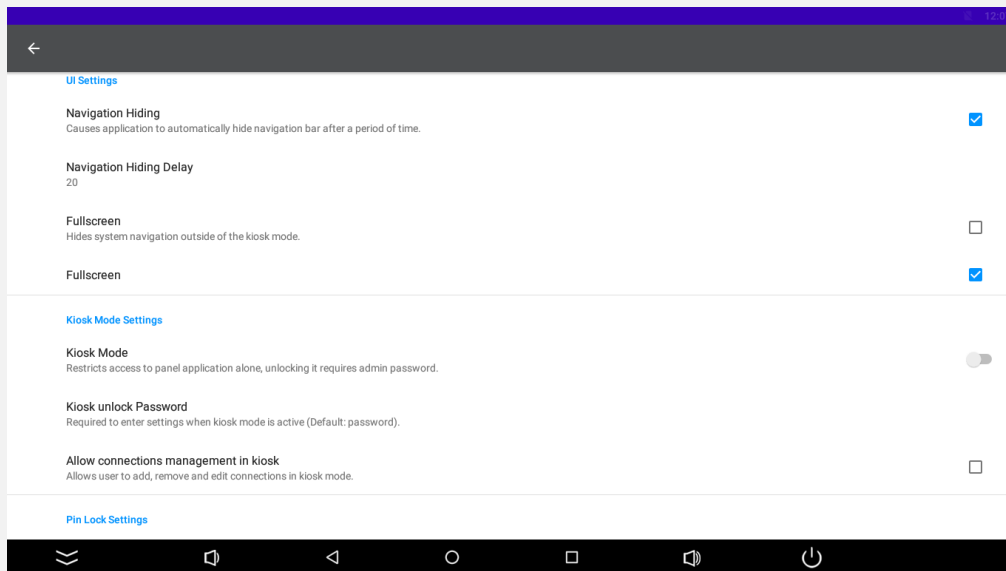
- Exclusive for **iSMA Android panels**
- Support for both Niagara stations and HTML5 webserver
- The application uses **HTTPS protocol** for logging in to Niagara station
- **Kiosk Mode**—the application has device owner permissions
- **Multistation**—the user can add more than one Niagara station and HTML5 webserver
- **Home station**—can be chosen only for one station, the chosen station will be automatically logged in after restarting or turning on the Industrial PC Panel with Android
- **PIN protection**—the PIN can be added to station credentials, it works exactly as the PIN protection in a smartphone
- **Settings can be exported** to a file and then **imported** to another Android panel with the app
- Easy application update—just connect a **USB flash drive** and install updated application
- **Rest API** commands for remote management



iSMA Android Application

Specification

When the Kiosk Mode is turned off, all possibilities of the Android system can still be used. The below figure shows the possibility of turning on/off the Kiosk Mode and changing the Admin password:



What can be done with Rest API?

We have implemented the Rest API to allow making changes remotely:

- Remote login and logout—can be used it to set a time schedule to log as different users, for example, the receptionist should have different permissions than a night security guard
- Remote turning the Kiosk Mode off
- Setting one station as the home station
- Getting the list of all saved stations
- Remove added station
- Add or edit a station

We have implemented a special menu to allow going back to the previous page, going forward, refreshing, and the home button:

