

MODEL	DESCRIPTION
VSXT..	Two-way valve DN 1/2" - 3/4"; Kvs m ³ /h 0,25 - 6
VMXT..	Three-way valve DN 1/2" - 3/4"; Kvs m ³ /h 0,25 - 6 (4 angle way)
VTXX..	Three-way valve with built in by-pass DN 1/2" - 3/4"; Kvs m ³ /h 0,25 - 6 (4 angle way)

APPLICATION AND USE

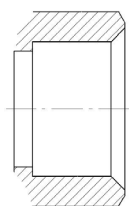
V.XT series valves are used for hot and chilled water control in two- or four-pipe fan coil units, zone plants, solar plants, small re-heaters and dehumidifiers, in electric/electronic temperature control systems. They are motorized by Controlli MVT.03S and MVC503R actuators.

MANUFACTURING CHARACTERISTICS

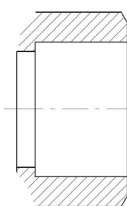
Brass valve body. Fortron plug with EPDM double OR. Stainless steel stem. Stem packing with EPDM double OR. All models are normally closed, i.e. the action of the valve spring makes the plug move to the upper seat, even with disassembled actuator.

TECHNICAL CHARACTERISTICS

Construction: PN16;
Control characteristics: equal percentage A-AB port, linear B-AB for Kv 0.25 to 2.5; linear A-AB port, linear B-AB for Kv4 and Kv6;
Stroke: 5,5mm;
Max fluid speed: 3m/s
Allowed fluids:
 - water 5T95 °C
 - glycol-added max 30%
Weight: see dimensions
Connections: male threaded gas connection flat or conic tight



conic tight

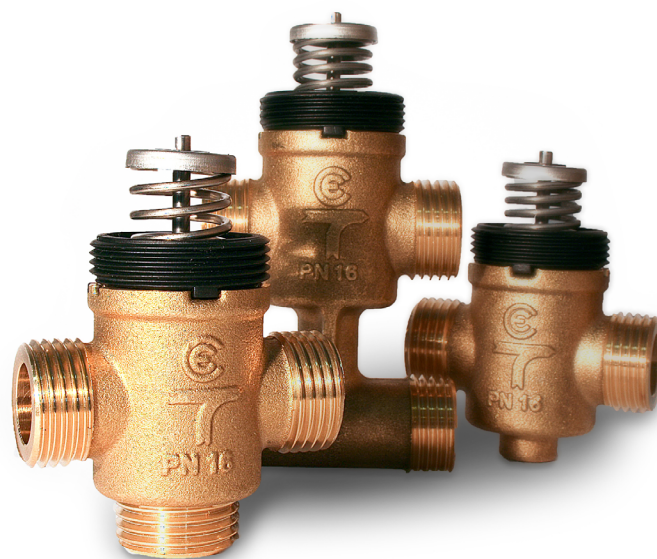


flat tight

OPERATION

V.XT valves without the actuator are normally closed (with reference to the direct way). The plug with double EPDM O-ring ensures tight close-off on both straight and angle way in all V.XT models. The valve tight close-off with DeltaP max is guaranteed by the valve spring, even without actuator.

Controlli S.p.A.
 16010 Sant'Olcese (GE)
 Tel. 010 73 06 1
 Fax. 010 73 06 870/871
www.controlli.eu



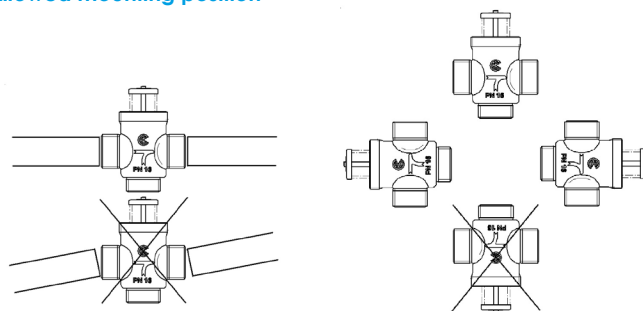
INSTALLATION AND MOUNTING

Before installing the valve, make sure that pipes are clean, free from foreign matter, perfectly aligned with the valve body and not subjected to vibration.

The valve can be mounted in any position but with the stem pointing downwards. 3-way valves must be used as mixing valves (see fig. 4 and 5).

Should valves be installed as diverting (one inlet two outlets) a reduction to 1/3 of the declared value will result in the max. differential pressure for standard operation.

Allowed mounting position



COUPLING VALVES V.XT

With MVT and MVC actuator

Before coupling the actuator to the valve, check that the thrust screw is at the top. If this is not the case, bear in mind that, in order to correctly position the actuator on the valve, the spring force of the valve must be overcome; then tighten the ring nut M30x1.5 on the thread on the valve body.

Type	Models	Connections	Flow rate (m³/h)	Dp max (KPa)	
2-way	VSXT09P	G 1/2 Flat tight	0,25	400	
	VSXT10P		0,4		
	VSXT11P		0,6		
	VSXT12P		1		
	VSXT13P		1,6		
	VSXT1P		2		
	VSXT21P	G 3/4 Flat tight	2,5	150	
	VSXT24P		4		
	VSXT26P		6		
		VSXT09	G 1/2 Conic tight	0,25	400
		VSXT10		0,4	
		VSXT11		0,6	
		VSXT12		1	
		VSXT13		1,6	
		VSXT1		2	
		VSXT21	G 3/4 Conic tight	2,5	
3-way		VMXT09P	G 1/2 Flat tight	0,25 (0,25)	400
		VMXT10P		0,4 (0,4)	
		VMXT11P		0,6 (0,6)	
	VMXT12P	1 (0,6)			
	VMXT13P	1,6 (1)			
	VMXT1P	2 (1,6)			
	VMXT21P	G 3/4 Flat tight	2,5 (2)	100 (40 angle way)	
	VMXT24P		4 (2,5)		
	VMXT26P		6 (4)		
		VMXT09	Conic tight	0,25 (0,25)	400
		VMXT10		0,4 (0,4)	
		VMXT11		0,6 (0,6)	
		VMXT12		1 (0,6)	
		VMXT13		1,6 (1)	
		VMXT1		2 (1,6)	
		VMXT21	G 3/4 Conic tight	2,5 (2)	
3-way valves with built-in by-pass (4-ports)		VTXT09P	G 1/2 Flat tight	0,25 (0,25)	400
		VTXT10P		0,4 (0,4)	
		VTXT11P		0,6 (0,6)	
	VTXT12P	1 (0,6)			
	VTXT13P	1,6 (1)			
	VTXT1P	2 (1,6)			
	VTXT21P	G 3/4 Flat tight	2,5 (2)	100 (40 angle way)	
	VTXT24P		4 (2,5)		
	VTXT26P		6 (4)		
		VTXT09	G 1/2 Conic tight	0,25 (0,25)	400
		VTXT10		0,4 (0,4)	
		VTXT11		0,6 (0,6)	
		VTXT12		1 (0,6)	
		VTXT13		1,6 (1)	
		VTXT1		2 (1,6)	
		VTXT21	G 3/4 Conic tight	2,5 (2)	

Type	Models	Connections	Flow rate (m³/h)	Dp max (KPa)
3-way valves with built-in by-pass (4-ports)	VTXT09P4	G 1/2 Flat tight interaxis 40 mm	0,25 (0,25)	400
	VTXT10P4		0,4 (0,4)	
	VTXT11P4		0,6 (0,6)	
	VTXT12P4		1 (0,6)	
	VTXT13P4		1,6 (1)	
	VTXT1P4		2 (1,6)	
	VTX21P4	G 3/4 Flat tight interaxis 40 mm	2,5 (2)	

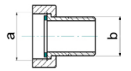
DP max = max. diff. press. guaranteed with closed valve and open flow

(*) The values in brackets represent Kvs on angle way.

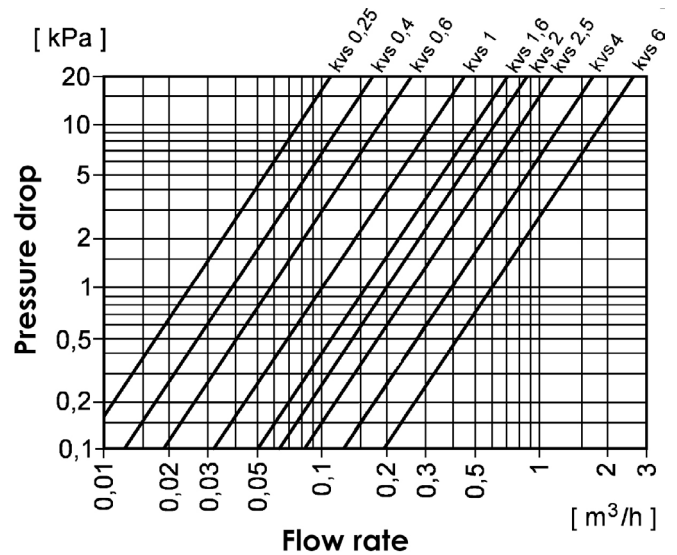
ACCESSORIES

FITTINGS

CODE	DN	a	b	Pack quantity
911-2078-010	15 (1/2")	G 1/2"	R 3/8"	10
911-2079-010	20 (3/4")	G 3/4"	R 1/2"	

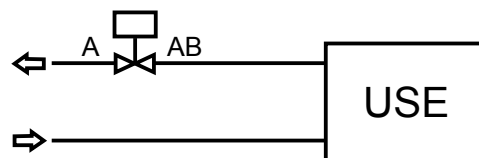


PRESSURE DROP DIAGRAM

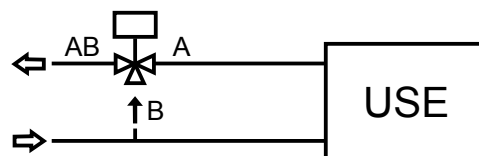


APPLICATION DIAGRAM

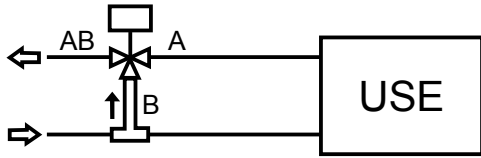
2-way valves (FIG.3)



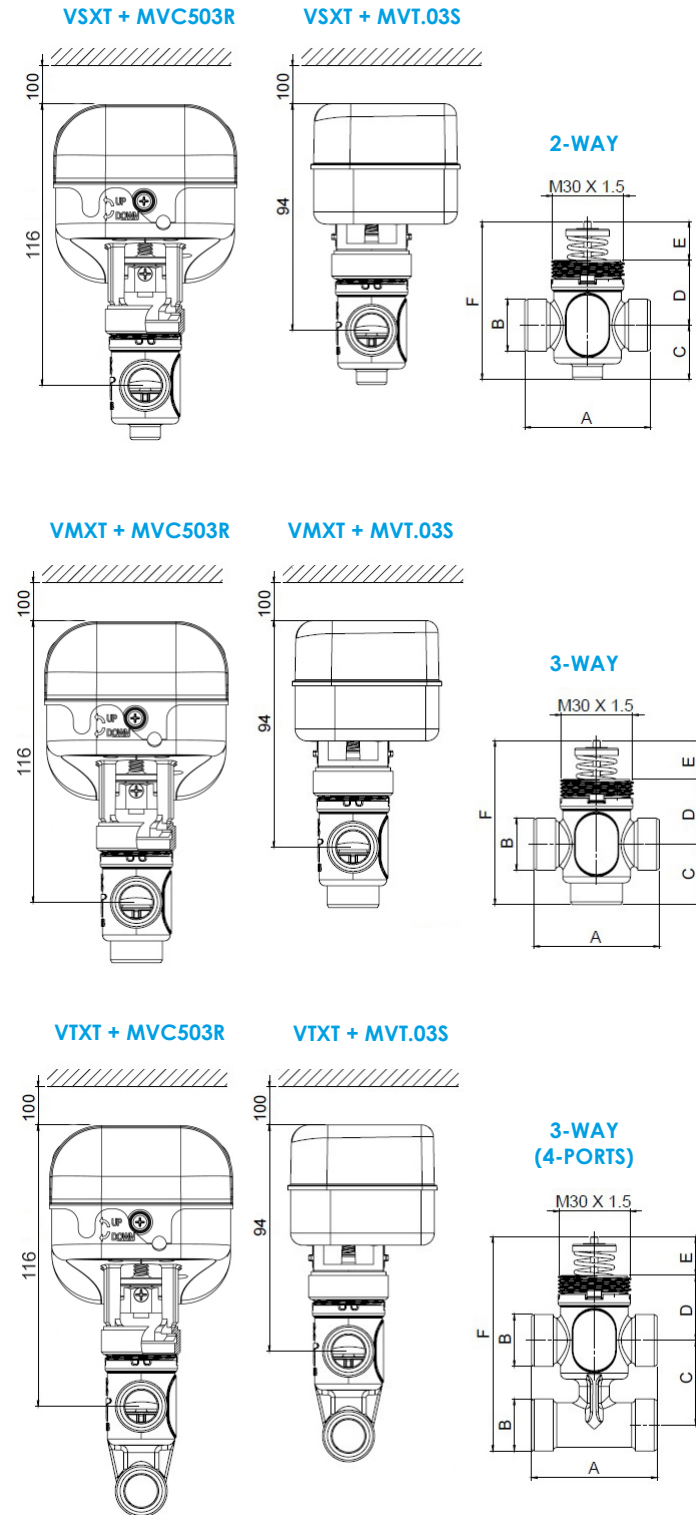
3-way valves (FIG.4)



3-way valves with bypass (FIG.5)



DIMENSIONS [mm]



Valve	Actuator	a	b	c	d	e	f
VSXT09P VSXT10P VSXT11P VSXT12P VSXT13P-VSXT13	MVT203S MVT403S MVT503S MVC503R	52	G1/2"A	22,5	27	15,6	65
VSXT21-VSXT21P		56	G3/4"A	23,6	25,8		

Valve	Actuator	a	b	c	d	e	f
VMXT09P VMXT10P VMXT11P VMXT12P VMXT13P-VMXT13	MVT203S MVT403S MVT503S MVC503R	52	G1/2"A	25	27	15,6	67,6
VMXT21-VMXT21P		56	G3/4"A	34	25,8		75,4

Valve	Actuator	a	b	c	d	e	f
VTXT09P VTXT10P VTXT11P VTXT12P VTXT13P-VTXT13	MVT203S MVT403S MVT503S MVC503R	52	G1/2"A	35	27	15,6	88,4
VTXT09P4 VTXT10P4 VTXT11P4 VTXT12P4 VTXT13P4 VTXT1P4		56	G1/2"A	40			93,4
VTXT21-VTXT21P		56	G3/4"A	50	25,8		98,4
VTXT21P4		56	G3/4"A	40	25,8		88,4

Valve	Actuator	a	b	c	d	e	f
VSXT24P VSXT26P	MVT203S MVT403S MVT503S MVC503R	78	G3/4" A	20,5	41	15,6	77,1
VMXT24P VMXT26P				36			92,6
VTXT24P VTXT26P				44			107,6

The performances stated in this sheet can be modified without any prior notice