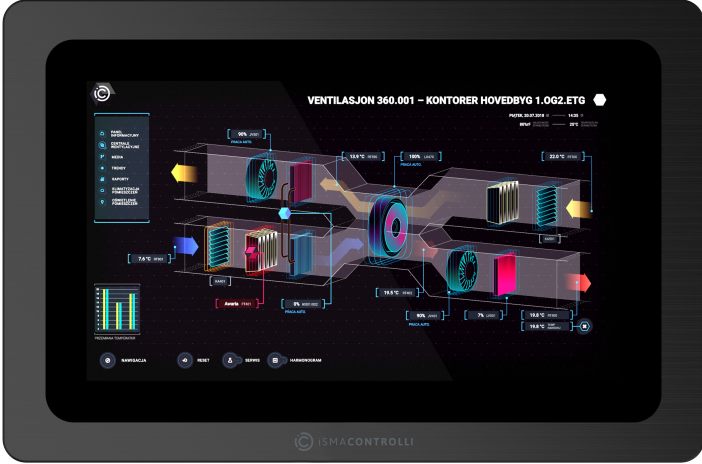


10.1" Industrial LCD Panel

MODEL	DESCRIPTION
iSMA-D-PD10C-B1	10.1" Industrial LCD Panel



APPLICATION AND USE

iSMA-D-PD10C-B1 is 10.1" Industrial LCD Panel designed to simplify the use of the iSMA-B-MAC36NL controller by leveraging the HDMI output. The LCD panel is equipped with multiple interfaces to accelerate the connection with the master controller. The RJ45 port prevents from falling out a dedicated wire for transmitting touch commands with USB 2.0 from the controller (RJ45-USB). The aspect ratio of 16:10 with a 1366x768 resolution enable clear display of graphics. The panel is suited for control panel installation. It is also VESA compliant and can be wall-mounted. The panel has an extensive menu in 7 languages, where the displayed image can be customized. Available with EU, UK, or US power adapter.

FEATURES

- 10.1" display with capacitive touch screen
 - Resolution
 - for iSMA-B-MAC36NL: 1280x720
 - for panel: 1366x768
 - Interface HDMI, DVI, VGA, I/O audio, RJ45-USB for touch input
- Aspect ratio 16:10
 - Response time 5 ms
 - IP65 for front panel
 - Aluminum alloy enclosure
 - VESA compatible
 - Available with EU, UK or US power adapter

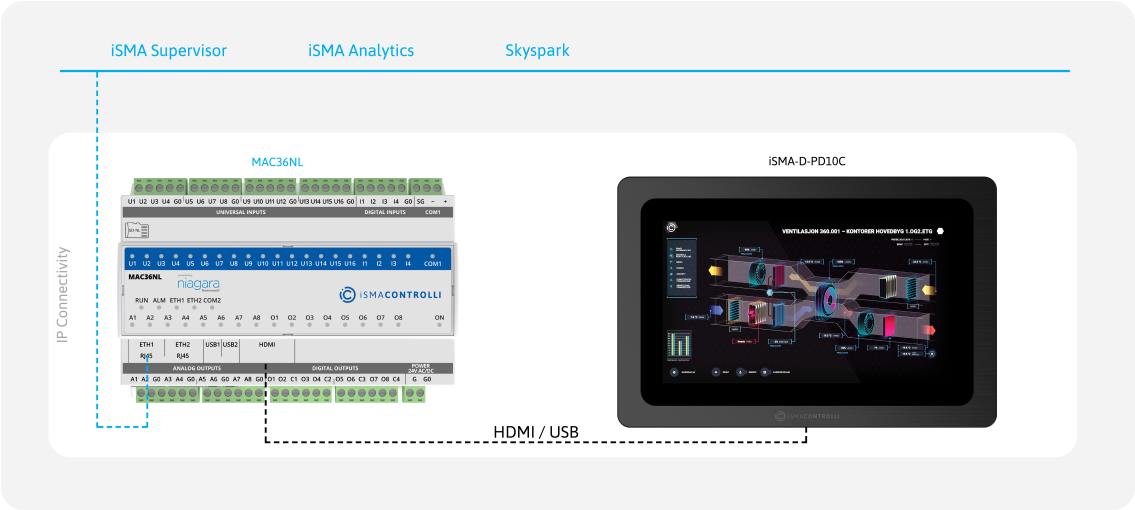
TECHNICAL SPECIFICATION

DESCRIPTION		10.1" LCD PANEL
Power supply	Voltage	110-240 V AC, 50/60 Hz
	Power input	12 V DC/24 V DC
	Power adapter	EU, UK, or US
Display	Screen type	LCD, backlight lifetime ≥50000 h
	Touch type	10-point capacitive touch screen
	Size	10.1 in
	Aspect ratio	16:10
	Resolution	1280x720 (for iSMA-B-MAC36NL), 1366x768 (for panel)
	Contrast	800:1
	Luminance standard	300 nit
	Response time	5 ms
	Active area	222.70x125.20 mm/8.77x4.93 in
	Display colors	16.7 M
	View angle	75/75/75/75

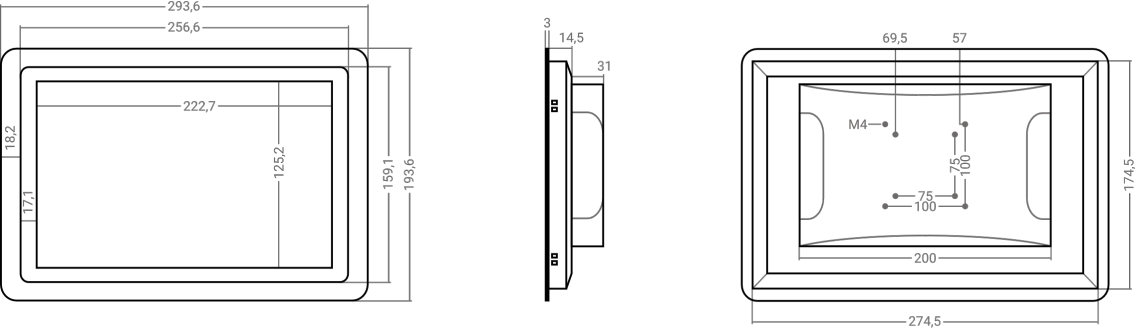
The performances stated in this sheet can be modified without any prior notice.

DESCRIPTION		10.1" LCD PANEL
Interfaces	Touch	RJ45-USB
	Audio	Audio output
	Graphic	VGA, DVI
	HDMI	HDMI port
Ingress protection	IP rating	IP 65 for front panel
Temperature	Storage	-10°C to 60°C (14°F to 140°F)
	Operating	-10°C to 60°C (14°F to 140°F)
Humidity	Relative	10 to 80% RH
Housing	Material	Aluminum alloy enclosure
	Mounting	VESA compatibility, embedding, wall mounting
Dimensions	Width	293.60 mm/11.56 in
	Length	193.60 mm/7.62 in
	Height	48.50 mm/1.90 in

APPLICATION EXAMPLE



DIMENSIONS [mm]



QUICKLINK SOLUTIONS S.r.l. | info@qlsol.com
Sede operativa nord ovest: Via G. Matteotti 193-203, 21044 Cavaria con Premazzo (VA), Italy
Sede operativa nord est: Via F. Petrarca, 34, 35020 Albignasego (PD), Italy